

RODPIE58 series



E: Voltage output
 C: Open collector output
 F: Complementary output(Push pull)
 L: Line driver Output(5vTTL)
 T: Line driver (HTL)

Explanation of model



E: Axial cable
 G: Radial cable

For example

ROD-PIE5806-2048Z-G10-30T-1M is shaft diameter $\Phi 8$, 2048P/R, side entry plug, supply voltage 10-30V, line driver output with 1 meter cable .

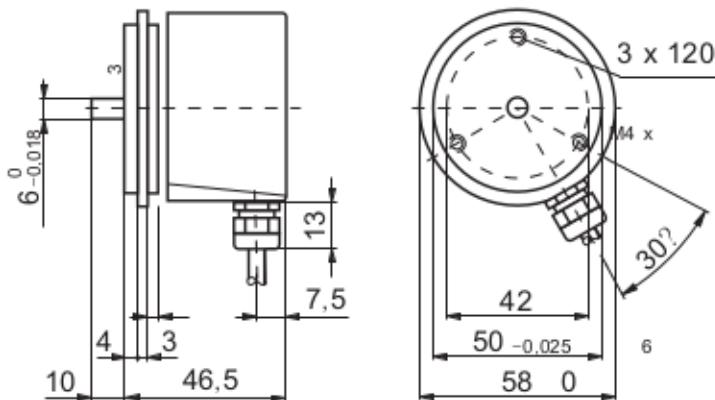
Technical data

Resolution	100-5000P/R	Rotating inertia	$3.5 \times 10^{-6} \text{kg} \cdot \text{m}^2$
Supply voltage	DC5V~30V	Max rotating speed	6000r/min
V_H Output voltage	$\geq V_{CC} \times 70\%$	Vibration resistance	50m/s ² (10 ~ 200Hz) (XYZeach direction2hours)
V_L Output voltage	$\leq 0.5V$	Shock resistance	980m/s ² (XYZeach direction2times) 1ms/6ms
Current consumption	$\leq 150\text{mA}$	Protection	IP65
Output phase	A. B. Z	Operating temperature	-10°C ~ +70°C
Frequency response	100kHz Max	Storage temperature	-20°C ~ +80°C
Rise/fall time	$\leq 1\mu\text{s}$ or line driver $\leq 0.1\mu\text{s}$	Operating humidity	30 ~ 85% RH
Starting torque	$3 \times 10^{-3} \text{N} \cdot \text{m} (+25^\circ\text{C})$	Weight (no cable)	0.5kg
Shaft loading	Radial 40N Axial 20N	Accessories	

Connection table

cable color		Red	Black	White	Green	Yellow	Blue	Orange	Brown	Shield
Output form	C/E/F	VCC	0V	A	B	Z	—	—	—	FG
	P/L/D/H/M	VCC	0V	A	B	Z	\bar{A}	\bar{B}	\bar{Z}	FG
7PIN CX16K7P plug		1	7	3	4	5	—	—	—	6
9PIN CX16K9P plug		4	3	1	2	5	8	9	6	7

Dimension(mm)



Connector M23 male
 for connection references -A and -B
 05A, 24K, 25W

Connector	Signals
Pin 1	-A
Pin 2	+Vs
Pin 3	Z
Pin 4	-Z
Pin 5	B
Pin 6	-B
Pin 7	n.c.
Pin 8	A
Pin 9	Housing
Pin 10	0V
Pin 11	0V
Pin 12	+Vs

