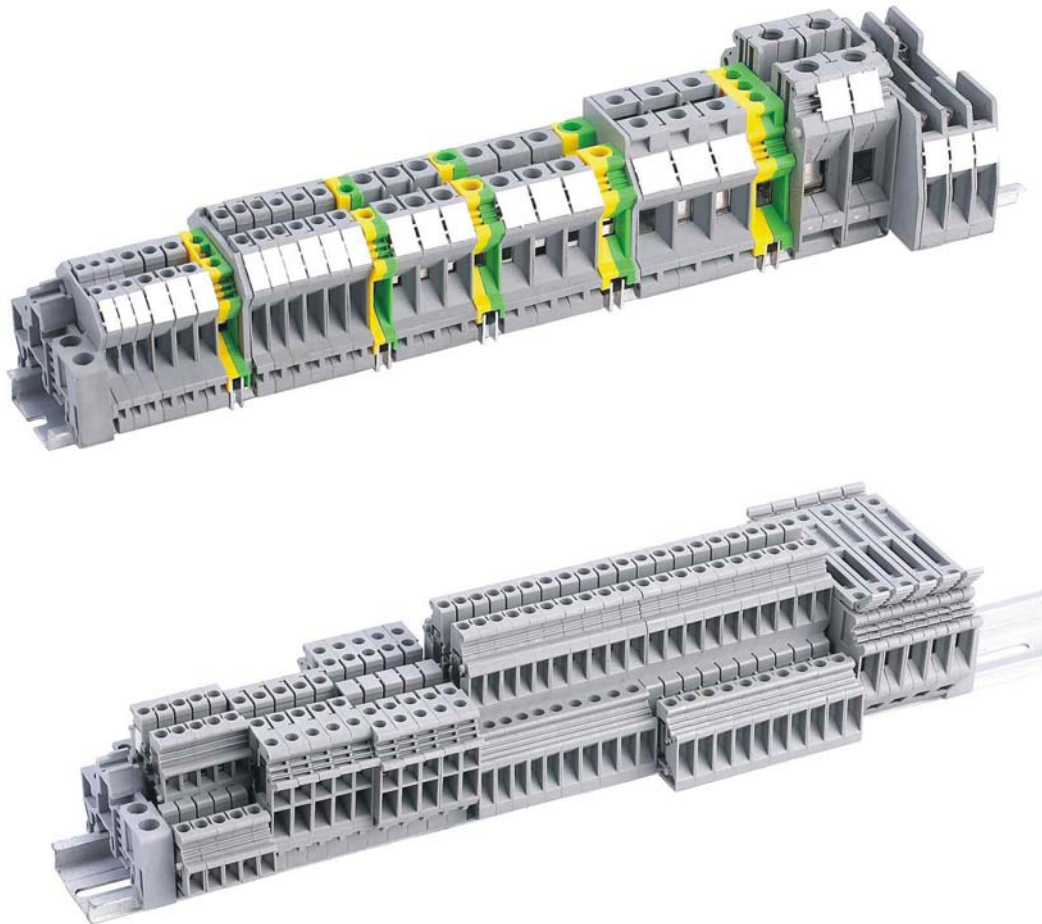


## TUK系列工业配电接线端子

工业配电接线端子-螺钉类（通用型）

Industrial Distribution Terminal Blocks – Screw type (Universal)



材质颜色  
Material/Available Color



(库存) BN RD OG BU WT BK (≥5000只可定制)

### 螺丝固定型接线座之特性

- ⊙ 适合范围宽广的导线线径
- ⊙ 简易的导线连接方式(可连接多组导线)
- ⊙ 容易扩充及延伸性佳
- ⊙ 操作简易且连结处安全性高
- ⊙ 优良的抗震防松设计
- ⊙ 高可靠度且无需维护保养
- ⊙ 极低的接触阻抗
- ⊙ 接线座从轨道上安装及拆卸容易

### Features of Screw Clamp Terminal Blocks

- ⊙ Suitable for broad range of cross-section and types of wires.
- ⊙ Wires can be connected without any special preparation.
- ⊙ Easy for the extension of terminal connection.
- ⊙ Ease of handling and safe connection.
- ⊙ An excellent vibration proof protection against loosening.
- ⊙ High reliability and maintenance free.
- ⊙ Very low contact resistance.
- ⊙ Easy mounting and dismantling from the terminal rail.

工业配电接线端子-螺钉类 (通用型)  
Industrial Distribution Terminal Blocks – Screw type (Universal)

TUK-1.5



刚性导线(mm <sup>2</sup> ) Rigid cable	柔性导线(mm <sup>2</sup> ) Soft cable	AWG
0.14-1.5	0.14-1.5	26-16
IEC947-7-1 EN50019*	17.5A 500V 17A 275V	
厚 / 宽 / 高 / 高 Thickness/Width / Height/ Height 4.2/42.5/42/47		
额定冲击电压 Insulating impulse voltage withstand		6KV
阻燃等级 Inflaming retarding grade		V0
扭紧力矩 Torque(lb-in)		0.22-0.25 (Nm)
螺丝 Clamping Screw(M)		M2
剥线长度 Insulation stripping leghth(mm)		7mm

TUK-2.5B



刚性导线(mm <sup>2</sup> ) Rigid cable	柔性导线(mm <sup>2</sup> ) Soft cable	AWG
0.2-4	0.2-2.5	24-12
IEC947-7-1 EN50019*	32A 690V 28/22A 550V	
厚 / 宽 / 高 / 高 Thickness/Width / Height/ Height 6.2/42.5/42/47		
额定冲击电压 Insulating impulse voltage withstand		8KV
阻燃等级 Inflaming retarding grade		V0
扭紧力矩 Torque(lb-in)		0.6-0.8 (Nm)
螺丝 Clamping Screw(M)		M3
剥线长度 Insulation stripping leghth(mm)		7mm

TUK-2.5



刚性导线(mm <sup>2</sup> ) Rigid cable	柔性导线(mm <sup>2</sup> ) Soft cable	AWG
0.2-4	0.2-2.5	24-12
IEC947-7-1 EN50019*	32A 800V 28/32A 750V	
厚 / 宽 / 高 / 高 Thickness/Width / Height/ Height 5.2/42.5/47/52		
额定冲击电压 Insulating impulse voltage withstand		8KV
阻燃等级 Inflaming retarding grade		V0
扭紧力矩 Torque(lb-in)		0.6-0.8 (Nm)
螺丝 Clamping Screw(M)		M3
剥线长度 Insulation stripping leghth(mm)		8mm

TUK-4



刚性导线(mm <sup>2</sup> ) Rigid cable	柔性导线(mm <sup>2</sup> ) Soft cable	AWG
0.2-6	0.2-4	24-10
IEC947-7-1 EN50019*	41A 800V 38/30A 750V	
厚 / 宽 / 高 / 高 Thickness/Width / Height/ Height 6.2/42.5/47/52		
额定冲击电压 Insulating impulse voltage withstand		8KV
阻燃等级 Inflaming retarding grade		V0
扭紧力矩 Torque(lb-in)		0.6-0.8 (Nm)
螺丝 Clamping Screw(M)		M3
剥线长度 Insulation stripping leghth(mm)		8mm

TUK-6



刚性导线(mm <sup>2</sup> ) Rigid cable	柔性导线(mm <sup>2</sup> ) Soft cable	AWG
0.5-16	0.5-10	20-6
IEC947-7-1 EN50019*	76A 800V 73/57A 750V	
厚 / 宽 / 高 / 高 Thickness/Width / Height/ Height 10.2/42.5/47/52		
额定冲击电压 Insulating impulse voltage withstand		8KV
阻燃等级 Inflaming retarding grade		V0
扭紧力矩 Torque(lb-in)		1.5-1.8 (Nm)
螺丝 Clamping Screw(M)		M4
剥线长度 Insulation stripping leghth(mm)		10mm

TUK-10



刚性导线(mm <sup>2</sup> ) Rigid cable	柔性导线(mm <sup>2</sup> ) Soft cable	AWG
0.5-16	0.5-10	20-6
IEC947-7-1 EN50019*	17.5A 500V 17A 275V	
厚 / 宽 / 高 / 高 Thickness/Width / Height/ Height 10.2/42.5/47/52		
额定冲击电压 Insulating impulse voltage withstand		8KV
阻燃等级 Inflaming retarding grade		V0
扭紧力矩 Torque(lb-in)		1.5-1.8 (Nm)
螺丝 Clamping Screw(M)		M4
剥线长度 Insulation stripping leghth(mm)		10mm

工业配电接线端子-螺钉类 (通用型)  
Industrial Distribution Terminal Blocks – Screw type (Universal)

**TUK-16**



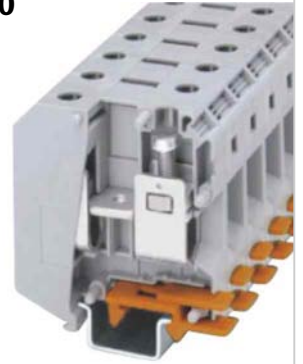
刚性导线(mm <sup>2</sup> ) Rigid cable	柔性导线(mm <sup>2</sup> ) Soft cable	AWG
2.5-25	4-16	12-4
IEC947-7-1 EN50019*	101A 800V 88/72A 750V	
厚 / 宽 / 高 / 高 Thickness/Width / Height/ Height	12.2/42.5/54/59	
额定冲击电压 Insulating impulse voltage withstand	8KV	
阻燃等级 Inflaming retarding grade	V0	
扭紧力矩 Torque(lb-in)	1.5-1.8 (Nm)	
螺丝 Clamping Screw(M)	M4	
剥线长度 Insulation stripping lehgth(mm)	11mm	

**TUK-35**



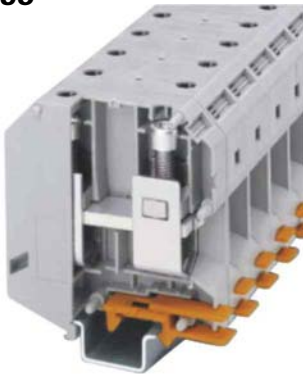
刚性导线(mm <sup>2</sup> ) Rigid cable	柔性导线(mm <sup>2</sup> ) Soft cable	AWG
0.75-50	0.75-35	18-0
IEC947-7-1 EN50019*	150A 1000V 145/112A 750V	
厚 / 宽 / 高 / 高 Thickness/Width / Height/ Height	15.2/50/62/67	
额定冲击电压 Insulating impulse voltage withstand	8KV	
阻燃等级 Inflaming retarding grade	V0	
扭紧力矩 Torque(lb-in)	3.2-3.7 (Nm)	
螺丝 Clamping Screw(M)	M6	
剥线长度 Insulation stripping lehgth(mm)	16mm	

**TUK-50**



刚性导线(mm <sup>2</sup> ) Rigid cable	柔性导线(mm <sup>2</sup> ) Soft cable	AWG
16-50	25-50	6-0
IEC947-7-1	150A 1000V	
厚 / 宽 / 高 / 高 Thickness/Width / Height/ Height	20.2/71.3/77.2/82.4	
额定冲击电压 Insulating impulse voltage withstand	8KV	
阻燃等级 Inflaming retarding grade	V0	
扭紧力矩 Torque(lb-in)	3.2-3.7 (Nm)	
螺丝 Clamping Screw(M)	M6	
剥线长度 Insulation stripping lehgth(mm)	16mm	

**TUK-95**



刚性导线(mm <sup>2</sup> ) Rigid cable	柔性导线(mm <sup>2</sup> ) Soft cable	AWG
25-95	35-95	4-000
IEC947-7-1	232A 1000V	
厚 / 宽 / 高 / 高 Thickness/Width / Height/ Height	26/83.6/91.6/97.4	
额定冲击电压 Insulating impulse voltage withstand	8KV	
阻燃等级 Inflaming retarding grade	V0	
扭紧力矩 Torque(lb-in)	3.2-3.7 (Nm)	
螺丝 Clamping Screw(M)	M6	
剥线长度 Insulation stripping lehgth(mm)	16mm	

**TUK-150**



刚性导线(mm <sup>2</sup> ) Rigid cable	柔性导线(mm <sup>2</sup> ) Soft cable	AWG
35-150	50-150	2-300
IEC947-7-1	309A 1000V	
厚 / 宽 / 高 / 高 Thickness/Width / Height/ Height	31.6/101/112.5/118	
额定冲击电压 Insulating impulse voltage withstand	8KV	
阻燃等级 Inflaming retarding grade	V0	
扭紧力矩 Torque(lb-in)	3.2-3.7 (Nm)	
螺丝 Clamping Screw(M)	M6	
剥线长度 Insulation stripping lehgth(mm)	16mm	

**TTK-6S**



刚性导线(mm <sup>2</sup> ) Rigid cable	柔性导线(mm <sup>2</sup> ) Soft cable	AWG
0.5-10	0.5-6	20-8
IEC947-7-1 EN50019*	57A 400V	
厚 / 宽 / 高 / 高 Thickness/Width / Height/ Height	8.2/72/51.5/56.5	
额定冲击电压 Insulating impulse voltage withstand	6KV	
阻燃等级 Inflaming retarding grade	V0	
扭紧力矩 Torque(lb-in)	1.2-1.5 (Nm)	
螺丝 Clamping Screw(M)	M4	
剥线长度 Insulation stripping lehgth(mm)	13mm	

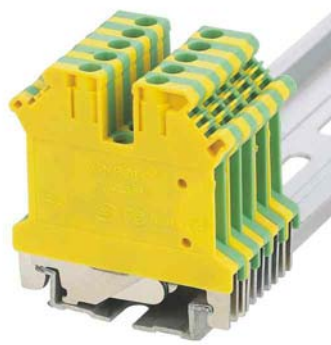
工业配电接地端子-螺钉类 (通用型)  
Industrial Ground Terminal Blocks – Screw type (Universal)

TUK-2.5BJD



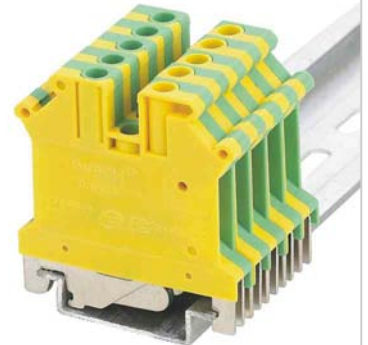
刚性导线(mm <sup>2</sup> ) Rigid cable	柔性导线(mm <sup>2</sup> ) Soft cable	AWG
0.2-4	0.2-2.5	24-12
IEC947-7-1 EN50019*	32A 690V 28/22A 550V	
厚 / 宽 / 高 / 高 Thickness/Width / Height/ Height	6.2/42.5/42/47	
额定冲击电压 Insulating impulse voltage withstand	8KV	
阻燃等级 Inflaming retarding grade	V0	
扭紧力矩 Torque(lb-in)	0.6-0.8 (Nm)	
螺丝 Clamping Screw(M)	M3	
剥线长度 Insulation stripping lehgth(mm)	7mm	

TUK-2.5JD



刚性导线(mm <sup>2</sup> ) Rigid cable	柔性导线(mm <sup>2</sup> ) Soft cable	AWG
0.2-4	0.2-2.5	24-12
IEC947-7-1 EN50019*	32A 800V 28/32A 750V	
厚 / 宽 / 高 / 高 Thickness/Width / Height/ Height	5.2/42.5/47/52	
额定冲击电压 Insulating impulse voltage withstand	8KV	
阻燃等级 Inflaming retarding grade	V0	
扭紧力矩 Torque(lb-in)	0.6-0.8 (Nm)	
螺丝 Clamping Screw(M)	M3	
剥线长度 Insulation stripping lehgth(mm)	8mm	

TUK-4JD



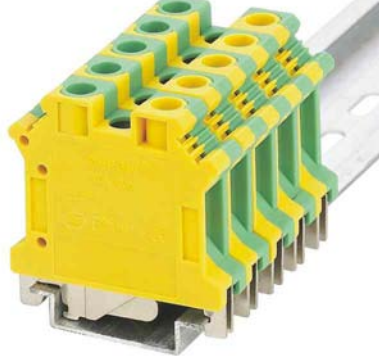
刚性导线(mm <sup>2</sup> ) Rigid cable	柔性导线(mm <sup>2</sup> ) Soft cable	AWG
0.2-6	0.2-4	24-10
IEC947-7-1 EN50019*	41A 800V 38/30A 750V	
厚 / 宽 / 高 / 高 Thickness/Width / Height/ Height	6.2/42.5/47/52	
额定冲击电压 Insulating impulse voltage withstand	8KV	
阻燃等级 Inflaming retarding grade	V0	
扭紧力矩 Torque(lb-in)	0.6-0.8 (Nm)	
螺丝 Clamping Screw(M)	M3	
剥线长度 Insulation stripping lehgth(mm)	8mm	

TUK-6JD



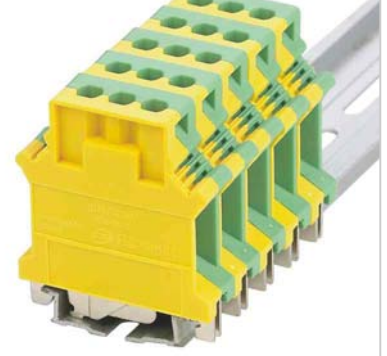
刚性导线(mm <sup>2</sup> ) Rigid cable	柔性导线(mm <sup>2</sup> ) Soft cable	AWG
0.5-16	05-10	20-6
IEC947-7-1 EN50019*	76A 800V 73/57A 750V	
厚 / 宽 / 高 / 高 Thickness/Width / Height/ Height	10.2/42.5/47/52	
额定冲击电压 Insulating impulse voltage withstand	8KV	
阻燃等级 Inflaming retarding grade	V0	
扭紧力矩 Torque(lb-in)	1.5-1.8 (Nm)	
螺丝 Clamping Screw(M)	M4	
剥线长度 Insulation stripping lehgth(mm)	10mm	

TUK-10JD



刚性导线(mm <sup>2</sup> ) Rigid cable	柔性导线(mm <sup>2</sup> ) Soft cable	AWG
0.5-16	05-10	20-6
IEC947-7-1 EN50019*	17.5A 500V 17A 275V	
厚 / 宽 / 高 / 高 Thickness/Width / Height/ Height	10.2/42.5/47/52	
额定冲击电压 Insulating impulse voltage withstand	8KV	
阻燃等级 Inflaming retarding grade	V0	
扭紧力矩 Torque(lb-in)	1.5-1.8 (Nm)	
螺丝 Clamping Screw(M)	M4	
剥线长度 Insulation stripping lehgth(mm)	10mm	

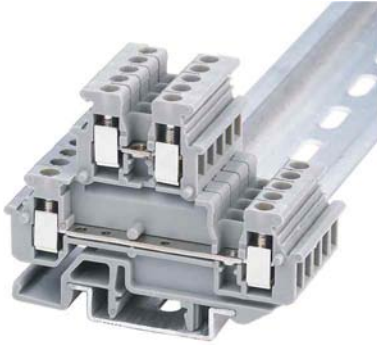
TUK-16JD



刚性导线(mm <sup>2</sup> ) Rigid cable	柔性导线(mm <sup>2</sup> ) Soft cable	AWG
2.5-25	4-16	12-4
IEC947-7-1 EN50019*	101A 800V 88/72A 750V	
厚 / 宽 / 高 / 高 Thickness/Width / Height/ Height	12.2/42.5/54/59	
额定冲击电压 Insulating impulse voltage withstand	8KV	
阻燃等级 Inflaming retarding grade	V0	
扭紧力矩 Torque(lb-in)	1.5-1.8 (Nm)	
螺丝 Clamping Screw(M)	M4	
剥线长度 Insulation stripping lehgth(mm)	11mm	

工业配电接线端子-螺钉类 (通用型)  
Industrial Distribution Terminal Blocks – Screw type (Universal)

**TMBKKB-2.5**



刚性导线(mm <sup>2</sup> ) Rigid cable	柔性导线(mm <sup>2</sup> ) Soft cable	AWG
0.2-4	0.2-2.5	24-12
IEC947-7-1 EN50019* 24A 500V		
厚 / 宽 / 高 / 高 Thickness/Width / Height/ Height		5.2/62/48/55.5
额定冲击电压 Insulating impulse voltage withstand		6KV
阻燃等级 Inflaming retarding grade		V0
扭紧力矩 Torque(lb-in)		1.2-1.5 (Nm)
螺丝 Clamping Screw(M)		M4
剥线长度 Insulation stripping lehgth(mm)		13mm

**TUKKB-3**



刚性导线(mm <sup>2</sup> ) Rigid cable	柔性导线(mm <sup>2</sup> ) Soft cable	AWG
0.2-4	0.2-2.5	24-12
IEC947-7-1 EN50019* 32A 500V		
厚 / 宽 / 高 / 高 Thickness/Width / Height/ Height		5.2/67/62/67
额定冲击电压 Insulating impulse voltage withstand		6KV
阻燃等级 Inflaming retarding grade		V0
扭紧力矩 Torque(lb-in)		1.2-1.5 (Nm)
螺丝 Clamping Screw(M)		M4
剥线长度 Insulation stripping lehgth(mm)		13mm

**TUKKB-5**



刚性导线(mm <sup>2</sup> ) Rigid cable	柔性导线(mm <sup>2</sup> ) Soft cable	AWG
0.2-4	0.2-4	24-12
IEC947-7-1 32A 500V		
厚 / 宽 / 高 / 高 Thickness/Width / Height/ Height		6.2/67/62/67
额定冲击电压 Insulating impulse voltage withstand		8KV
阻燃等级 Inflaming retarding grade		V0
扭紧力矩 Torque(lb-in)		3.2-3.7 (Nm)
螺丝 Clamping Screw(M)		M6
剥线长度 Insulation stripping lehgth(mm)		16mm

**TUKK-3**



刚性导线(mm <sup>2</sup> ) Rigid cable	柔性导线(mm <sup>2</sup> ) Soft cable	AWG
0.2-4	0.2-2.5	24-12
IEC947-7-1 32A 500V		
厚 / 宽 / 高 / 高 Thickness/Width / Height/ Height		5.2/56/62/67
额定冲击电压 Insulating impulse voltage withstand		8KV
阻燃等级 Inflaming retarding grade		V0
扭紧力矩 Torque(lb-in)		1.5-1.8 (Nm)
螺丝 Clamping Screw(M)		M4
剥线长度 Insulation stripping lehgth(mm)		11mm

**TUKK-5**



刚性导线(mm <sup>2</sup> ) Rigid cable	柔性导线(mm <sup>2</sup> ) Soft cable	AWG
0.2-4	0.2-2.5	24-12
IEC947-7-1 32A 500V		
厚 / 宽 / 高 / 高 Thickness/Width / Height/ Height		6.2/56/62/67
额定冲击电压 Insulating impulse voltage withstand		8KV
阻燃等级 Inflaming retarding grade		V0
扭紧力矩 Torque(lb-in)		3.2-3.7 (Nm)
螺丝 Clamping Screw(M)		M6
剥线长度 Insulation stripping lehgth(mm)		16mm

工业配电接线端子-螺钉类 (通用型)  
Industrial Distribution Terminal Blocks – Screw type (Universal)

TUDK-4



刚性导线(mm <sup>2</sup> ) Rigid cable	柔性导线(mm <sup>2</sup> ) Soft cable	AWG
0.2-4	0.2-4	24-12
IEC947-7-1 32A 690V		
厚 / 宽 / 高 / 高 Thickness/Width / Height/ Height		6.2/63.5/47/52
额定冲击电压 Insulating impulse voltage withstand		8KV
阻燃等级 Inflaming retarding grade		V0
扭紧力矩 Torque(lb-in)		3.2-3.7 (Nm)
螺丝 Clamping Screw(M)		M6
剥线长度 Insulation stripping leghth(mm)		16mm

TUK-5TWIN



刚性导线(mm <sup>2</sup> ) Rigid cable	柔性导线(mm <sup>2</sup> ) Soft cable	AWG
0.2-4	0.2-4	24-12
IEC947-7-1 32A 500V		
厚 / 宽 / 高 / 高 Thickness/Width / Height/ Height		6.2/50.5/47/52
额定冲击电压 Insulating impulse voltage withstand		8KV
阻燃等级 Inflaming retarding grade		V0
扭紧力矩 Torque(lb-in)		3.2-3.7 (Nm)
螺丝 Clamping Screw(M)		M6
剥线长度 Insulation stripping leghth(mm)		16mm

工业配电接线端子-保险丝端子 (通用型)  
Industrial Distribution Terminal Blocks – Screw type (Universal)

TUK-5HESI



刚性导线(mm <sup>2</sup> ) Rigid cable	柔性导线(mm <sup>2</sup> ) Soft cable	AWG
0.2-4	0.2-4	24-12
IEC947-7-1 800V		
厚 / 宽 / 高 / 高 Thickness/Width / Height/ Height		8.2/72.5/56.5/61.5
额定冲击电压 Insulating impulse voltage withstand		8KV
阻燃等级 Inflaming retarding grade		V0
扭紧力矩 Torque(lb-in)		3.2-3.7 (Nm)
螺丝 Clamping Screw(M)		M6
剥线长度 Insulation stripping leghth(mm)		16mm

TUK-10RHESI



刚性导线(mm <sup>2</sup> ) Rigid cable	柔性导线(mm <sup>2</sup> ) Soft cable	AWG
0.5-16	0.5-10	20-6
IEC947-7-1 800V		
厚 / 宽 / 高 / 高 Thickness/Width / Height/ Height		12/62/59/64
额定冲击电压 Insulating impulse voltage withstand		8KV
阻燃等级 Inflaming retarding grade		V0
扭紧力矩 Torque(lb-in)		3.2-3.7 (Nm)
螺丝 Clamping Screw(M)		M6
剥线长度 Insulation stripping leghth(mm)		16mm

工业配电接线端子-螺钉类 (通用型)  
Industrial Distribution Terminal Blocks – Screw type (Universal)

附件 型号	端板 End plate 	中心联络件 Central adaptor 	标记条 Mark bar 	终端固定件 Terminal fixed component 
TUK-1.5	D-TUK-1.5	TFB1.5/10	ZB4	
TUK-2.5B	D-TUK-1.5	TFB4/10	ZB6	
TUK-2.5	D-TUK-2.5-10	TFB2.5/10	ZB5	
TUK-4	D-TUK-2.5-10	TFB4/10	ZB6	
TUK-6	D-TUK-2.5-10	TFB6/10	ZB8	
TUK-10	D-TUK-2.5-10	TFB10/10	ZB10	
TUK-16	D-TUK-16	TFB16/10	ZB10	
TUK-35	封闭型外壳, 不用端板。 Sealed outer-case, don't need end plate	TFB35/2 TFB35/3	ZB10	
TUK-50	封闭型外壳, 不用端板。 Sealed outer-case, don't need end plate		ZB10	
TUK-95	封闭型外壳, 不用端板。 Sealed outer-case, don't need end plate		ZB10	TE/1, TE/2
TUK-150	封闭型外壳, 不用端板。 Sealed outer-case, don't need end plate		ZB10	
TTK-6S	D-TTK-6S	TFB6S/10/S(短) TFB6S/10/L(长)	ZB8	
TMBKKB-2.5	D-MBKKB-2.5	TFB2.5/10	ZB5	
TUKKB-3	D-TUKKB-3-5	TFB4/10	ZB5	
TUKKB-5	D-TUKKB-3-5	TFB4/10	ZB6	
TUKK-3	D-TUKK-3-5	TFB4/10	ZB5	
TUKK-5	D-TUKK-3-5	TFB2.5/10	ZB6	
TUDK-4	D-TUDK-4	TFB4/10	ZB6	
TUK-5TWIN	D-TUK-5TWIN	TFB4/10	ZB6	
TUK-5HESI	封闭型外壳, 不用端板。 Sealed outer-case, don't need end plate		ZB8	