

“台时封固”

4 x  $\phi 5.5$  完全贯穿  
 $\square \phi 10 \nabla 5.7$

2 x  $\phi 5.5$  完全贯穿  
 $\square \phi 10 \nabla 5.7$

A

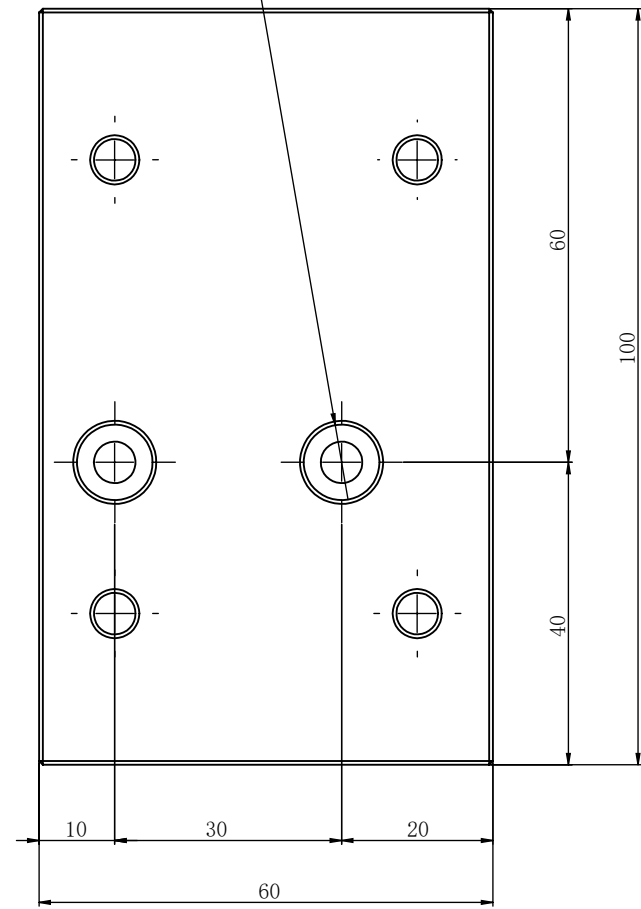
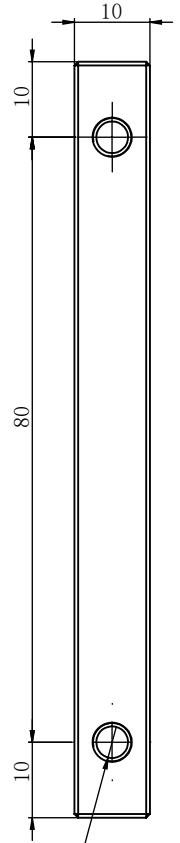
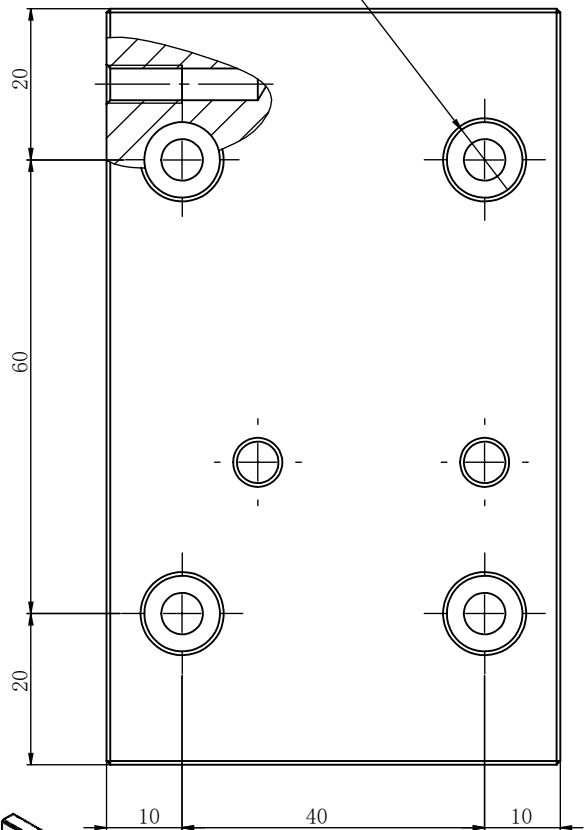
B

A

B

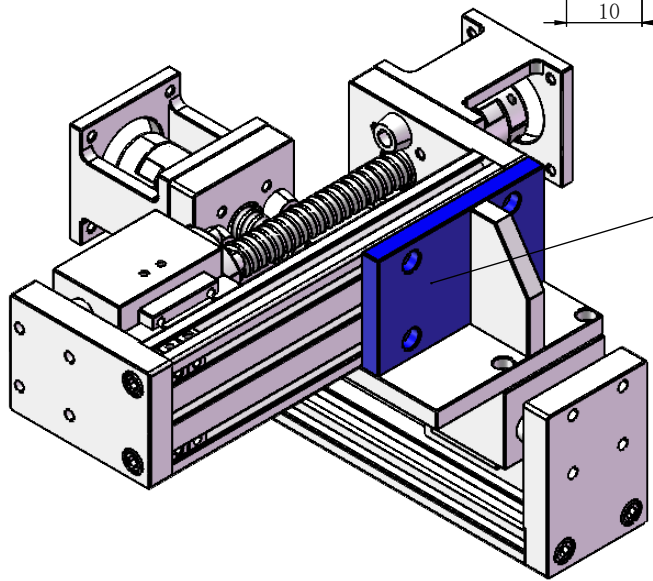
C

D



2 x M5 - 6H  $\nabla 10$   
 $\phi 4.2 \nabla 20$

连接板



零件代号

借(通)用件登记

旧底图总号

底图总号

签字

日期

简易60悬臂连接板2

时间:2023/7/5

丽水市永润精密机械有限公司