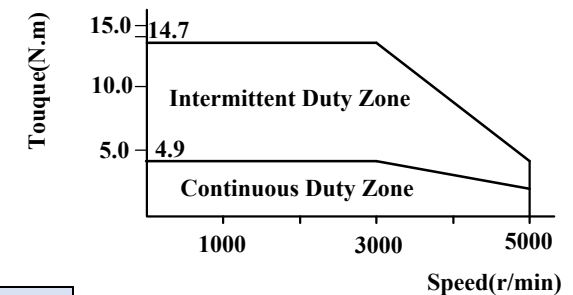
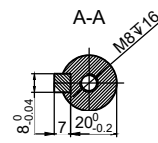
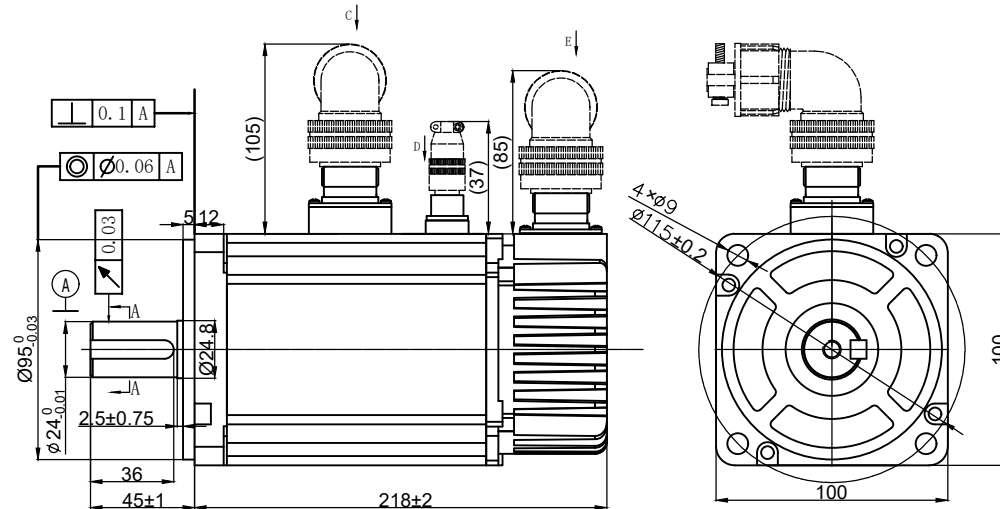
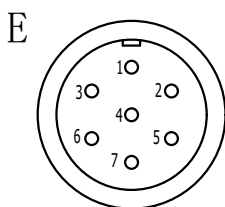


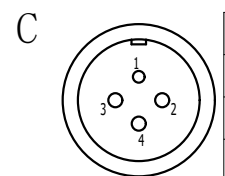
Rated Voltage (Vac)	<b>400</b>
Rated Power (w)	<b>1500</b>
Rated Torque (N.m)	<b>4.9</b>
Peak Torque (N.m)	<b>14.7</b>
Rated Speed (rpm)	<b>3000</b>
Peak Speed (rpm)	<b>5000</b>
Rated Current (Amp)	<b>4.5</b>
Peak Current (Amp)	<b>13.5</b>
Torque Const (N.m/Amp)	<b>1.09</b>
Back EMF Const(V/Krpm)	<b>70±5%</b>
Resistance(Ω)	<b>1.3±10%</b>
Inductance(mH)	<b>14.2±20%</b>
Inertia (kg*m <sup>2</sup> *10 <sup>-4</sup> )	<b>3.803</b>
Poles	<b>10</b>
Encoder type	<b>23bit optical</b>
IP rating	<b>S1</b>
Mass (Kg)	<b>7.1</b>
Allowable radial load(N)	<b>490</b>
Allowable thrust load(N)	<b>98</b>



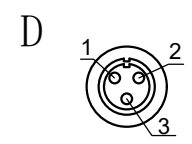
Brake Specification	
Capacity	15w
Rated Voltage	24vdc±10%
Holding Torque	>=8N.m
Braking Voltage	>18V
Releasing Voltage	< 1.5V
Braking time	<80ms
Releasing time	<40ms



Assignment of power connector with brake							
Pos	1	2	3	4	5	6	7
Signal	PE	+5V	GND	SD+	SD-	E+	E-
Color	/	Red	Black	Blue	Yellow	Brown	White



Assignment of power connector				
Pos	1	2	3	4
Signal	PE	U	V	W
Color	Yel/Gre	Red	Yellow	Blue



Assignment of power connector			
Pos	1	2	3
Signal	0V	24V	/

Leadshine Technology Co .Ltd

**ELM2L-1500LA100ET-H**

100mm,low inertia,1500w servo motor  
23bit optical encoder, with brake