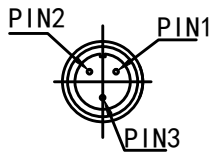
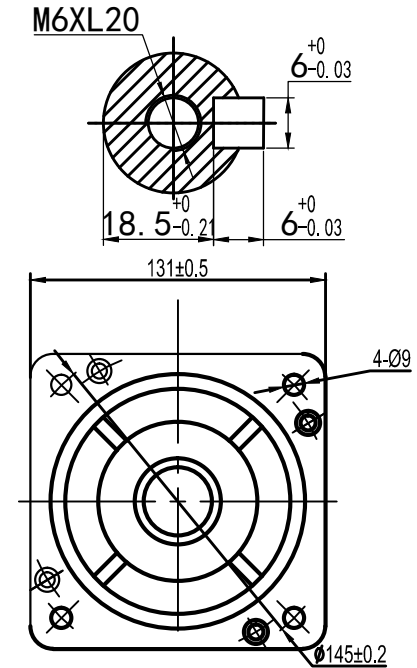
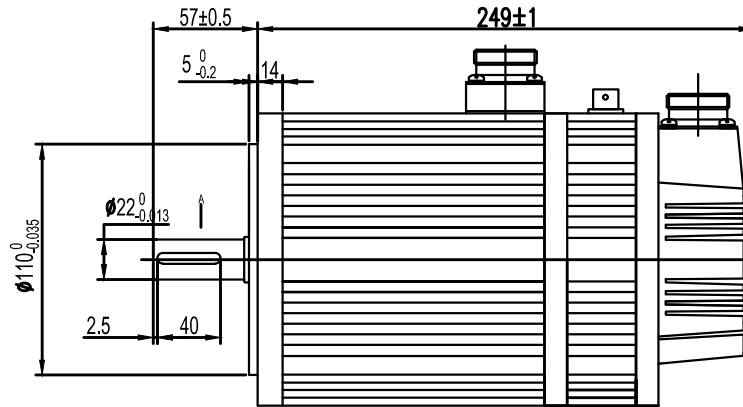
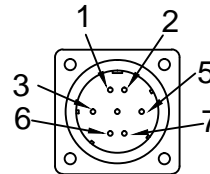


Rated Voltage (Vac)	<b>200-220</b>
Rated Power (w)	<b>2000</b>
Rated Torque (N.m)	<b>7.7</b>
Peak Torque (N.m)	<b>22</b>
Rated Speed (rpm)	<b>2500</b>
Peak Speed (rpm)	<b>3000</b>
Rated Current (Arms)	<b>7.5</b>
Peak Current (Arms)	<b>22</b>
Torque Const (N.m/Arms)	<b>1.03</b>
Back EMF Const (V/krpm)	<b>68</b>
Resistance ( $\Omega$ )	<b>1.01</b>
Inductance (mH)	<b>2.94</b>
Inertia ( $\text{kg}\cdot\text{m}^2\cdot 10^{-4}$ )	<b>15.3</b>
Poles	<b>8</b>
Encoder type	<b>23 bit absolute</b>
IP rating	<b>IP65</b>
Mass (Kg)	<b>9.9</b>

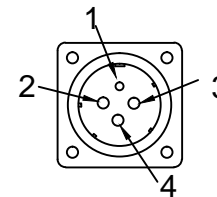


Braker Connection	
1	2
0V	24V



Wiring Order of Absolute Encoder Connector							
Position	1	2	3	4	5	6	7
Signal	PE	5V	0V	SD+	SD-	BAT+	BAT-
Color							

Motor Side Connector			
Connector	Winding Connector	Encoder Connector	Brake Connector
Part Num	YD28J4Z	YD28J7Z	XS12J3Y



Winding Connection				
Position	1	2	3	4
Signal	PE	U	V	W
Color				

Driver Side Connector			
Connector	Winding Connector	Encoder Connector	Brake Connector
Part Num	LS-YDA28K4TS-01	LS-YDA28K7TS-01	XS12K3P

Leadshine Technology Co .Ltd

**ELM2000LM130E-H**

130mm,middle inertia,2000w servo motor  
23bit absolute encoder, with brake